

TYPE

RDC 215

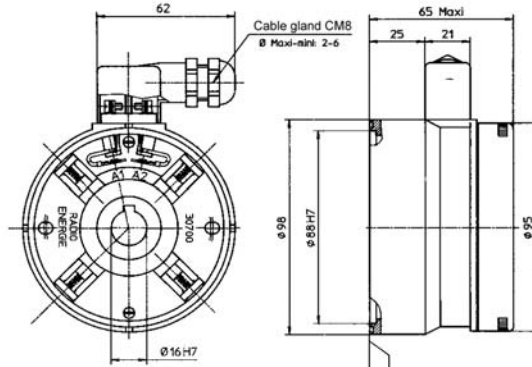


DESTINATION

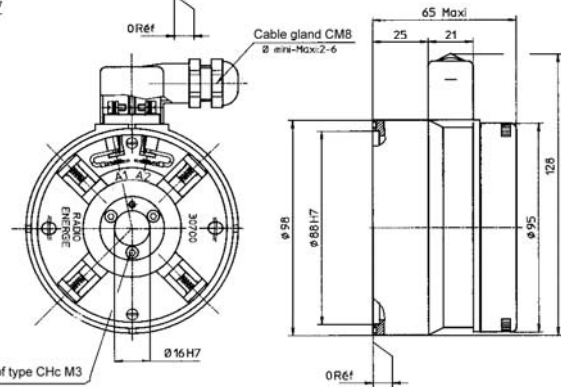
- Industrial applications
- Machine tools

DISCRIPTION

- Hollow shaft tachometer generator: rotor / stator set
- Permanent magnet excitation
- Collector on opposite of mounting side
- Several options
- **SILVER COLLECTOR**



RDC 215 KE



RDC 215 ME

Weight	kg	1,2
--------	----	-----

Armature fixing: 3 screws of type CHc M3
Recommended torque: 140 N.cm

GENERAL DATA

Designation	Symbol	Unit	Value
Maximum speed (mechanical)	n_m	U/min.	7500
Moment of inertia	J	kg cm ²	1,8
No load driving torque	M_r	N. cm	≤ 0,5
Maximum E.M.F.	E_m	V	3000
Maximum linearity error	ΔE	% E_T	≤ 0,15
Overall ripple rate (peak to peak)	ΔE_C	% E_C	≤ 0,5
Rotation harmonics (f = 2 p. n.)	ΔE_P	% E_C	≤ 0,05
Slot harmonics (f = Z. n.)	ΔE_Z	% E_C	≤ 0,45
Calibration precision	ΔE_O	% E_{T0}	± 2,0
E.M.F. temperature drift - not compensated - compensated	ΔE_e	% /°C	0,03
Time constant	Ct	ms	0,6
*Filter: Time constant	RF x CF	ms	0,1
Load current	I_C	mA	1,5
Speed	n	U/min.	3000

Construction Details	
Number of poles	4
Number of armature slots	33
Number of collector blades	33
Insulation class	B (IEC 34-1)
Operating temperature	-20° - 80 °C
Climatic protection	C _a (IEC 68-1)
Protection degree	IP00 (IEC 34-5) bis IP68 (DIN 40050)**
Direction of rotation	Reversible
Excitation	Permanent magnets SmCo

* Filter-connection diagram see following pages

** The protection degree refers to a mounted machine

Rev.: 02

We reserve the right to modify technical features in the interest of technical advance.

DESTINATION

- Industrial applications
- Machine tools

DISCRIPTION

- Hollow shaft tachometer generator: rotor / stator set
- Permanent magnet excitation
- Collector on opposite of mounting side
- Several Options
- **SILVER COLLECTOR**

TYPE
RDC 215

Mechanical options

Armature bore Ø d (mm)			Motor-centring end frame Ø D (mm)			Armature clamping device
Standard	Max.	Min.	Standard			
16 ^{H7}	16	8	88			Key or expanding device

Options**Available Options****Markings and Polarity of Terminals (cables) for counter clockwise rotation viewing the mounting face**

1 collector	2 collector
A1: + - A2: -	

Electrical Options

			Min.					Max.							
E.M.F. at 1000 rpm.	E _n	V	10	20	30	40	50	60							
Voltage gradient	C _v	V/rpm	0,01	0,02	0,03	0,04	0,05	0,06							
Armature resistance	R _a	Ω	5	24	36	62	97	130							
Max. thermal load	I _{th}	A	280	170	106	82	66	59							
Max. allowed speed	n _a	rpm	7500	7500	7500	7500	6000	5000							

Brushes

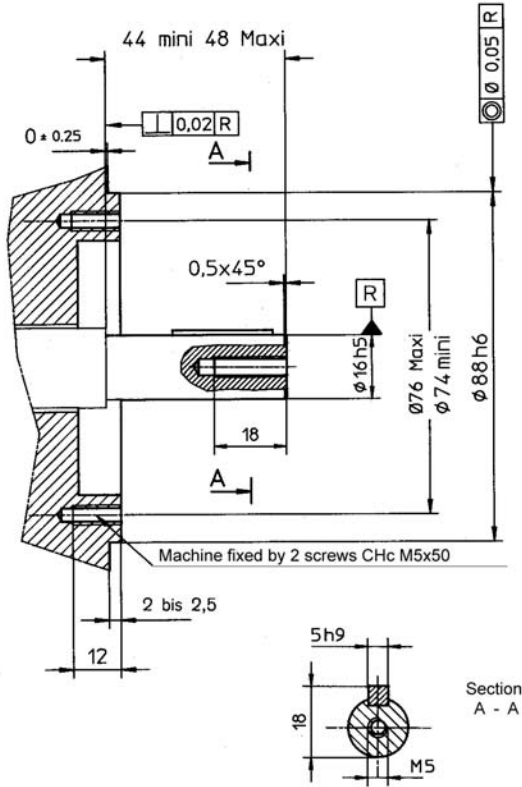
Number	Size	Quality	Application limits	Reference
4	4 x 6 x 13	Electro-graphite (EG)	Special applications, on request	
		Silver-graphite (CA)	STANDARD for normal use at E.M.F. < 300 V	60 - 40 - CA

Rev.: 02

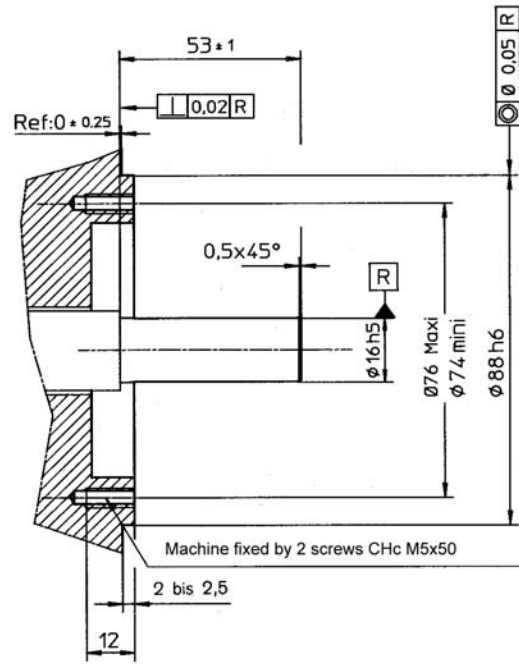
We reserve the right to modify technical features in the interest of technical advance.

MOUNTING INSTRUCTION

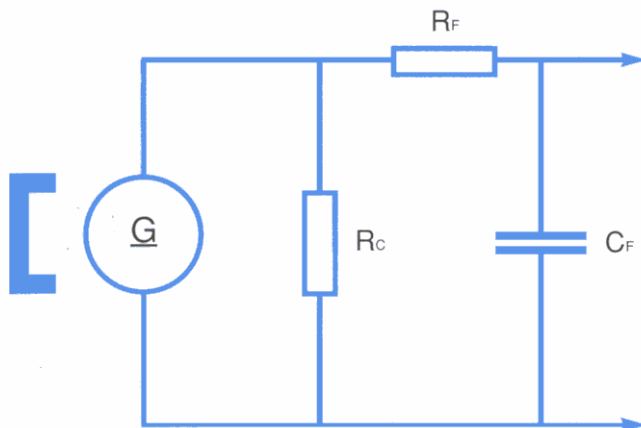
RDC 215 KE /KF



RDC 215 ME /MF



Filter Scheme



R_C : Load resistance
 R_F : Filter resistance
 C_F : Filter capacity